

FOX FURY - NOMAD LED PRIME

RECHARGEABLE, COMPACT, PORTABLE, SCENE AND SPOTLIGHT - NEW IMPROVED VERSION!



The Nomad PRIME is available with White, UV, Blue, Green or IR LEDs.

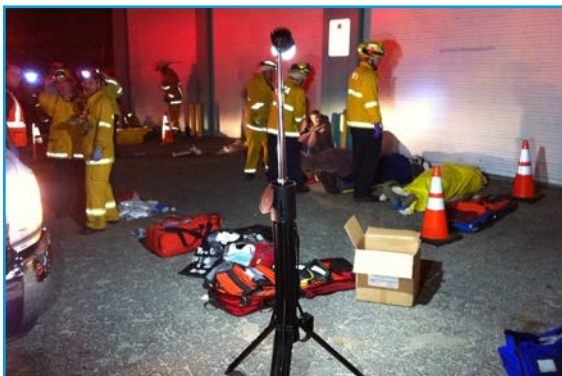
FROM TUBE TO LIGHT IN SECONDS!

The FoxFury Nomad PRIME is a self-contained portable, LED, rechargeable scene and spotlight. The system folds into a compact tube that is lightweight for transport using its shoulder strap. This portable light can go anywhere and is usable in all weather conditions.

When lighting is required and power is unavailable the Nomad can be deployed quickly and easily in under a minute. It can be charged or driven from either a 220VAC or a 12VDC supply.

FEATURES

- Light output up to 4000 Lumen
- Rechargeable Lithium-ion battery
- Spotlight (8°) or Scene Light (120°)
- 4 Intensities (Low, Medium, High & Warning Blinker)
- Head Rotates 340°
- All Weather and Impact Resistant
- Battery Status Indicator
- Built-in Level Indicator
- Legs Adjustable for uneven terrain
- Supplied with Shoulder Strap



FIRST RESPONSE

During a disaster or emergency (natural or man made) adequate lighting is critical to any type of response. Its absence or slow provision creates delays.

While generator lights are usually available and invaluable for lighting a large area, quick setup and repositioning is a logistical nightmare at best, and often a losing proposition. The FoxFury Nomad was designed to address these specific requirements, and provides either area or spot lighting in under a minute. Units can be quickly deployed and the area/spot combination is able to light large areas, even in the worst terrains imaginable.

TECHNICAL SPECIFICATIONS

Light Output	High / blinker: 4,000 lumen
	Medium: 1,300 lumen
	Low: 500 lumen
Application	8° spotlight or scene light
Distance of illumination (Spotlight)	Approximately 1.25 miles
Protection	All-weather and impact resistant
Weight	7.3 kg / 17.0 lb
Diameter (closed position)	11.7 cm / 4.6"
Length (closed position)	81.3 cm / 32.0"
Max Height (when deployed)	2410 mm / 95"
Construction	Nylon 66 body with 6061-T6 aluminium head, stainless steel telescoping tube.
Battery	Rechargeable lithium-ion 200Wh
Modes/Battery Life	Low intensity: 24h
	Medium intensity: 9 h
	High intensity: 3 h
	Warning blinker: 10 h
Recharge Time	Approximately 5 h
Operating Temperature	-10°C to 149°C

The Nomad uses the latest CREE LED technology, offering a maximum of 4000 Lumens output. Fully extended the Nomad reaches 94" (2.39 metres) in height. The head rotates 340° and adjusts up and down.

As standard the Nomad features a defused 120° LED scene light. The diffuser lens can also be removed to reveal a powerful 8° focused spotlight.

NOMAD APPLICATIONS

- Fire and Rescue
- Fire Scene Lighting
- Fire Investigation
- CBRN Police
- Scenes of Crime
- Collision Investigation
- Search and Rescue
- Forensic Investigation
- Law Enforcement
- Rapid Response
- Event Security
- Industrial & Maintenance
- Military
- Photography and Film



Defuser fitted - 120° Scene Light



Defuser removed - 8° Spot Light



Deploying Nomad PRIME



Nomad PRIME ready for transportation.



CFM SERVICES

THE CHIPPING
WOTTON-UNDER-EDGE
GLOUCESTERSHIRE GL12 7JH

info@cfmservices.co.uk